



At the heart of the image

DIGITAL CAMERA
COOLPIX
5200
4200



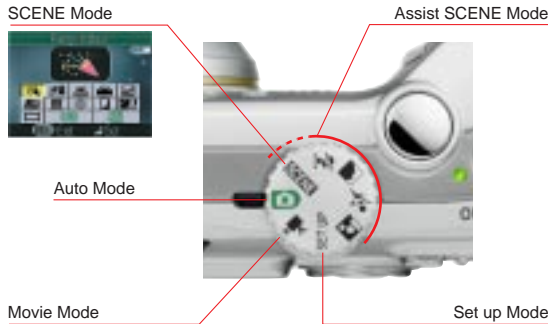
Streamlined performance to suit your lifestyle.

- 5.1 megapixel (COOLPIX 5200) / 4.0 megapixel (COOLPIX 4200) clarity
- Versatile optical 3x Zoom-Nikkor ED lens
- In-camera image correction with Advanced Red-eye Reduction
- New D-SLR-based image processing engine
- 15 user-friendly Scene modes, 4 with Scene Assist
- Full-size A4 prints — produced via PC or direct with PictBridge compatible printers
- Movie modes with audio at 30fps (COOLPIX 5200) and 15fps (COOLPIX 4200)
- Nikon's new easy-to-use "PictureProject" software included
- Large internal memory for image storage
- SD memory card compatible



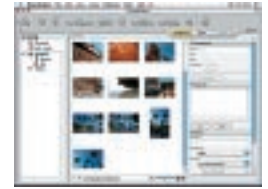
Ease of use

The handy mode dial enables easy mode selection. Simply choose the most appropriate icon, then enjoy point-and-shoot simplicity.



Nikon PictureProject software

Included with the E5200 and E4200, Nikon PictureProject takes the fun of digital photography further. Based on an entirely new concept for digital image software, new PictureProject enables easy data transfer to PC, offers an array of one-touch features for image editing and retouching, and makes organizing and archiving significantly simpler.



- Features intuitive GUI
- Enables easy drag 'n' drop control
- Supports smooth image transfer to PC and simple archiving
- Offers one-touch functions for image editing

Nikon Digital Camera COOLPIX 5200/COOLPIX 4200 Specifications

Type	Digital camera E5200	Digital camera E4200
Effective pixels	5.1 million	4.0 million
CCD	1/1.8 in. primary color CCD (5.26 million total pixels)	
Image size	5M (2,592 x 1,944), 3M (2,048 x 1,536), 2M (1,600 x 1,200), PC (1,024 x 768), TV (640 x 480)	4M (2,272 x 1,704), 3M (2,048 x 1,536), 2M (1,600 x 1,200), PC (1,024 x 768), TV (640 x 480)
Lens	3x Zoom-Nikkor; f=7.8-23.4mm (35mm format equivalent to 38-114mm) / f/2.8 - f/4.9; 7 elements in 6 groups (one ED lens and two aspherical lenses); Digital zoom: up to 4x	
Autofocus	Contrast-detect TTL AF	
Focus range	Approx. 30cm (11.8") - ∞; approx. 4cm (1.6") - ∞ at wide zoom position in macro close up mode	
Focus area	Auto (5-area automatic focus selection), Manual (99-area manual focus selection), Center-focus area selection available	
LCD monitor	1.5 in.; 110,000-dot low-temp. polysilicon TFT transfective LCD with brightness adjustment; Advanced brightness control LCD	
Storage media	Internal memory: approx. 12MB, SD memory card	
Shooting modes	Auto, Scene Assistance (Portrait, Landscape, Sports, Night portrait), Scene (Party/Indoor, Beach/Snow, Sunset, Dusk/Dawn, Night landscape, Close up, Museum, Fireworks show, Copy, Back light, Panorama assist), BSS (Best Shot Selector), Image adjustment, Image sharpening, Saturation control, Auto exposure bracketing, White Balance (Auto, Preset and 7 manual modes), WB bracketing, Digital zoom (Max. 4x), Noise reduction, Self-timer (3 sec., 10 sec.)	
Movie	TV movie (640*) at 30fps, Small size (320*) at 30fps, Smaller size (160) at 30fps	TV movie (640*) at 15fps, Small size (320*) at 15fps, Smaller size (160) at 15fps
Capture modes	Single, Continuous (2.5fps), Multi-shot 16 (16 frames 1/16 in size), 5 shot buffer	Single, Continuous (1fps), Multi-shot 16 (16 frames 1/16 in size), 5 shot buffer
Exposure metering	Matrix metering, Center-weighted metering, Spot metering	
Shutter	Mechanical and charge coupled electronic shutter	
Shutter speed	4-1/2,000 sec.	
Aperture	Electronically controlled preset aperture	
Aperture range	Two-step (f/2.8 and f/4.8 [Wide])	
Built-in speedlight	Auto, Red-eye Reduction Auto (Advanced Red-eye Reduction), Anytime Flash, Flash Cancel, and Slow sync.	
Interface	USB, Audio Video output (NTSC/PAL)	
Power requirements	One Rechargeable Li-ion Battery EN-EL5 (Supplied), One CP1 Lithium Battery (Optional), AC adapter EH-62A (Optional)	
Dimensions (W x H x D)	Approx. 88 x 60 x 36.5mm (3.5 x 2.3 x 1.4 in.)	
Weight	Approx. 155g (5.5 oz.) (Without battery and SD memory card)	
Supplied accessories*	Strap, USB cable, Audio Video cable, Li-ion rechargeable battery EN-EL5, Battery charger MH-61, Software CD-ROM, Quick Start Guide, and Instruction manual	
Optional accessories	AC Adapter EH-62A, Soft Case, Waterproof Case WP-CP2, and SD memory card	

*Standard accessories may differ by country or area.

PictureProject System Requirements

Macintosh OS: Mac OS X (10.1.5 or later)
RAM: 64MB or more recommended
Hard disk: 60MB required for installation
Display: 800 x 600 with 16-bit color (full color recommended)
Others: CD-ROM drive required for installation

Windows OS: Windows® 98SE, Windows® ME, Windows® 2000 Professional, Windows® XP Home Edition, Windows® XP Professional pre-installed models
RAM: 64MB or more recommended
Hard disk: 60MB required for installation
Display: 800 x 600 with 16-bit color (full color recommended)
Others: CD-ROM drive required for installation

Microsoft® and Windows® are either registered trademarks or trademarks of Microsoft Corporation in the United States and/or other countries. Macintosh® and QuickTime® are either registered trademarks or trademarks of Apple Computer Inc. in the United States and/or other countries. The FotoNation logo is a trademark. The SD logo is a trademark. PictBridge is a trademark. Products and brand names are trademarks or registered trademarks of their respective companies. Images on LCDs and monitors shown on this publication are simulated.

Specifications and equipment are subject to change without any notice or obligation on the part of the manufacturer. February 2004 ©2004 NIKON CORPORATION



WARNING

TO ENSURE CORRECT USAGE, READ MANUALS CAREFULLY BEFORE USING YOUR EQUIPMENT. SOME DOCUMENTATION IS SUPPLIED ON CD-ROM ONLY.



NIKON CORPORATION

Fuji Bldg., 2-3, Marunouchi 3-chome, Chiyoda-ku,
 Tokyo 100-8331, Japan

<http://nikonimaging.com/>